

Attention!

SAFETY INFORMATION, INSTALLATION, CARE AND MAINTENANCE INSTRUCTIONS. READ PRIOR TO ASSEMBLING AND USING THE PRODUCT.

Vuly cares about safety. Adult supervision is required at all times whilst equipment is in use.

Visit www.vulyplay.com/install for step by step video instructions, or scan this QR code:

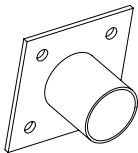


IMPORTANT:

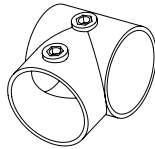
- Ensure that as you follow these instructions, you firmly secure all parts with nuts and bolts.
- Adult supervision is required at all times whilst equipment is in use. Vuly cares about safety.

Parts List

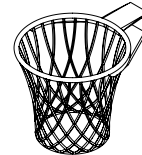
1x Base



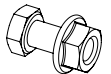
1x Joiner



1x Ring

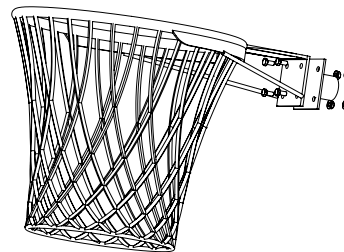


4x Bolts



STEP | 1

Connect the Ring to the Base. Ensure that they are firmly secured with nuts and bolts.

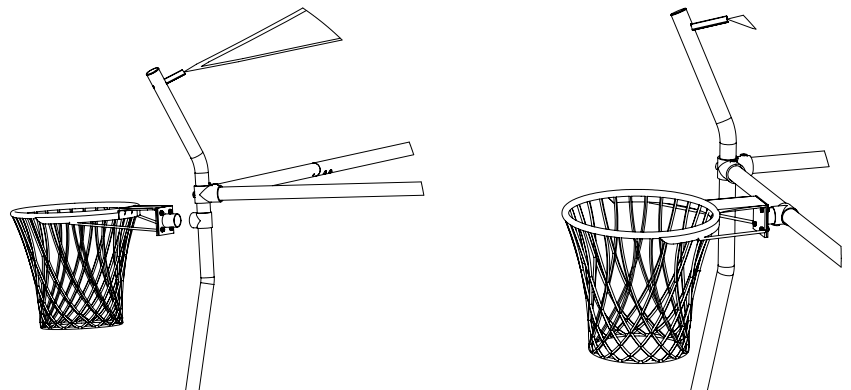


STEP | 2

Slide the Joiner into the Rail or Leg Tube where you want to position the Netball Ring, shown below.

STEP | 3

Insert the open end of the Base into the Joiner.



CONGRATULATIONS!

You have attached the Netball Ring to your monkey bar.